



# Sales



2 Bedroom House

The Fieldings | Northampton | Aspen

£118,000

## Full Description

2 bed 1 bathroom

### The Aspen: A Stylish 2-Bedroom Home at The Fieldings, Northampton

Emh Sales is proud to introduce **The Aspen**, a **2-bedroom semi-detached home** at the desirable The Fieldings, Northampton. A perfect choice for families, professionals, and those stepping onto the property ladder, this home combines modern design with everyday convenience. **Build completion for this home is currently scheduled for May 2026.** Please note that **viewings can only take place once the home has been fully built and after applicants have successfully completed their [affordability assessment](#).** As **reservations will be taken off plan**, we strongly recommend completing your application and submitting all required documents well in advance of build completion to avoid missing out. Located in the heart of Northamptonshire, **The Fieldings** offers the best of both worlds—peaceful surroundings with excellent access to local amenities. Northampton boasts:

- **Local shops, supermarkets, and leisure facilities** for everyday convenience
- **Beautiful parks and green spaces**, including Delapré Abbey and its historic grounds, perfect for outdoor activities
- **Fantastic transport links** to the A45, M1, and Northampton train station, making commuting to Milton Keynes, Coventry, and London simple

This vibrant location combines modern living with a strong sense of community, making it ideal for families, professionals, and first-time buyers.

---

## Your Path to Homeownership with Shared Ownership

This home is available through **New Model Shared Ownership (NMSO)**, making homeownership more accessible than ever. Here's what you need to know:

- **Buy from just 10%** of the property value
- **Flexible staircasing:** Increase your share gradually, starting from 1% annually or 5% at a time
- **10-year repair and maintenance support** for your new-build home
- **Secure 990-year lease** for peace of mind

The price shown is based on a **40% share**, but you can purchase between **10% and 75%**, subject to affordability.

---

## About the Area: Northampton

The Fieldings is a modern development in the thriving town of Northampton, offering the perfect balance of convenience and community. This sought-after location provides everything you need for contemporary living:

- **Local Amenities:** Enjoy easy access to supermarkets, independent shops, welcoming pubs, and a variety of cafes and restaurants.
- **Leisure & Green Spaces:** Explore nearby parks and open spaces ideal for walking, cycling, and family activities. Delapré Abbey and its stunning grounds are just a short distance away for peaceful escapes.
- **Excellent Transport Links:** With quick connections to the A45 and M1, commuting to Milton Keynes, Coventry, or Birmingham is simple and stress-free. Northampton train station also offers direct routes to London.
- **Education & Community:** The area is well-served by reputable schools, sports facilities, and healthcare services, making it perfect for families and professionals alike.

Living at The Fieldings means enjoying a vibrant lifestyle with all the essentials close at hand, while still being surrounded by beautiful Northamptonshire countryside.

---

## Ready to Make The Aspen Yours?

Shared Ownership lets you buy a share of your home and pay rent on the rest, with the option to own 100% over time. It's a fantastic way to step onto the property ladder. **Click below to check your eligibility and start your application today!** [Apply Here](#)

- **Note:** The price shown is representative of a 40% share. Shares are available from 10% to 75% dependent upon an affordability assessment. For more details on the share purchase price and rent examples, please refer to the [Key Information Document](#).

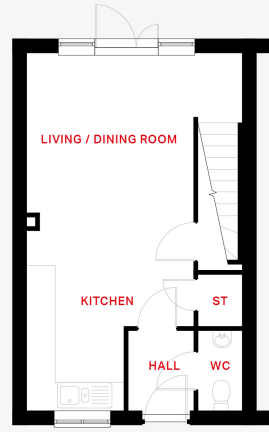
## Features

- Modern fitted kitchen
- Integrated fridge freezer
- Built-in stainless steel oven, hob, and cooker hood
- USB charging sockets
- Gas central heating
- Energy-efficient lighting
- Solar panels
- Flooring to kitchen, bathroom and WC
- Lawn to rear garden
- Outside tap
- Off-road parking for two vehicles
- Electric vehicle charging point

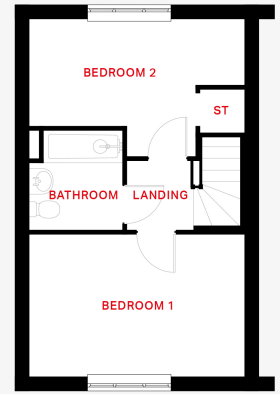
## Location

## Floorplans

Plots 14 & 15



**GROUND FLOOR**  
Living / Dining Room / Kitchen  
7.72m x 4.67m



**FIRST FLOOR**  
Bedroom 1  
4.67m x 3.08m  
Bedroom 2  
4.67m x 2.33m